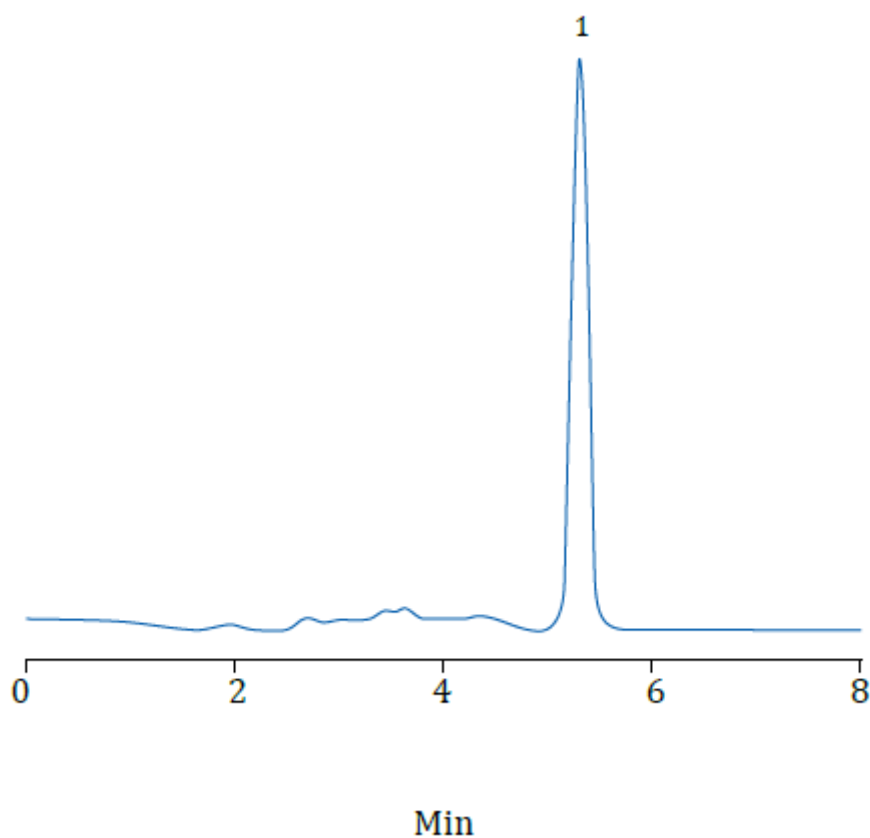


Glyphosate

No.1209059

1. Glyphosate



Column: Athena SAX 4.6 × 150mm, 5 μ m (8.461521.0001)
Mobile phase: methanol / 10mM KH₂PO₄ (pH 2.0) (15/85)
Flow rate: 1.0 mL/min
Detection: 195 nm
Column temperature: 25 °C

ATHENA SAX APPLICATION & ORDERING INFORMATION

Ordering Information:

Packings	Particle size	diameter x length	Cat. No
CNWSep SAX	3µm	2.1×50mm	8.2105G1.0001
CNWSep SAX	3µm	2.1×100mm	8.2110G1.0001
CNWSep SAX	3µm	4.6×50mm	8.4605G1.0001
CNWSep SAX	3µm	4.6×100mm	8.4610G1.0001
CNWSep SAX	3µm	4.6×150mm	8.4615G1.0001
CNWSep SAX	5µm	2.1×50mm	8.2105G2.0001
CNWSep SAX	5µm	2.1×100mm	8.2110G2.0001
CNWSep SAX	5µm	2.1×150mm	8.2115G2.0001
CNWSep SAX	5µm	4.6×50mm	8.4605G2.0001
CNWSep SAX	5µm	4.6×100mm	8.4610G2.0001
CNWSep SAX	5µm	4.6×150mm	8.4615G2.0001
CNWSep SAX	5µm	4.6×250mm	8.4625G2.0001
CNWSep SAX	10µm	2.1×50mm	8.2105G3.0001
CNWSep SAX	10µm	2.1×100mm	8.2110G3.0001
CNWSep SAX	10µm	2.1×150mm	8.2115G3.0001
CNWSep SAX	10µm	4.6×50mm	8.4605G3.0001
CNWSep SAX	10µm	4.6×100mm	8.4610G3.0001
CNWSep SAX	10µm	4.6×150mm	8.4615G3.0001
CNWSep SAX	10µm	4.6×250mm	8.4625G3.0001

ATHENA SAX APPLICATION & ORDERING INFORMATION

www.doalab.com

info@doalab.com (+90) 212 509 21 12