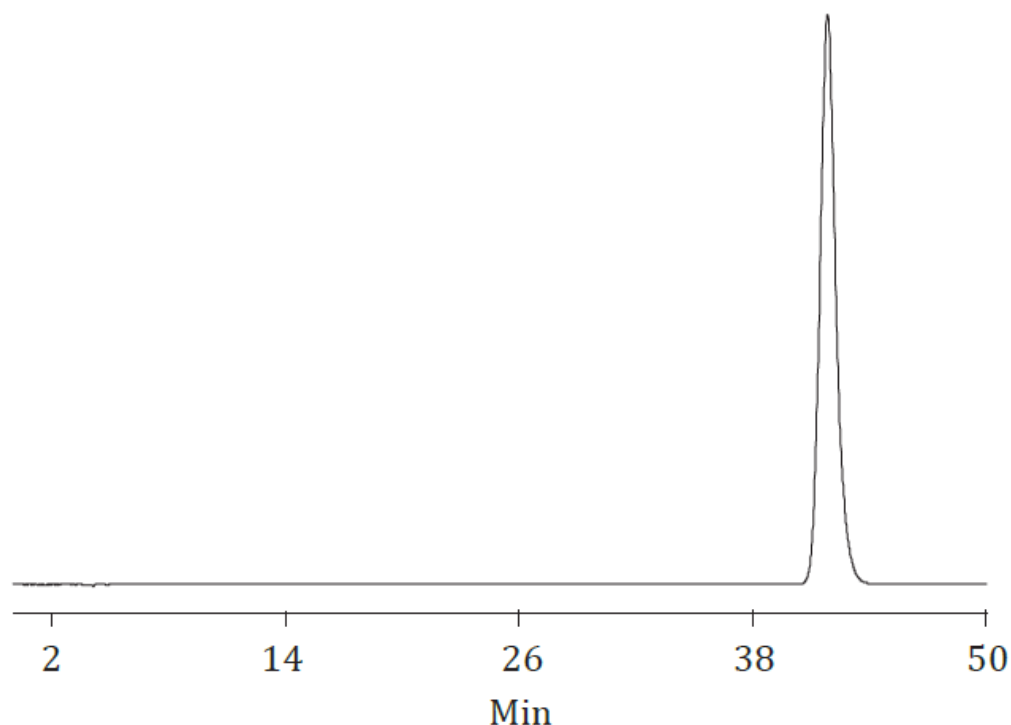


Carbamazepine**LC-10043**

1. Carbamazepine

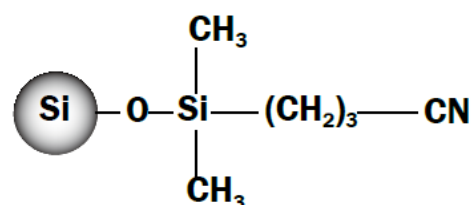
298-46-4



Column	Athena CN 4.6 × 250mm, 5 μm (LAEQ-462533)
Mobile Phase	Methanol / H ₂ O / TFA (12/85/3)
Flow Rate	1.0 ml/min
Column Temperature	25 °C
Detector	230 nm

[Can be used for normal or reverse phase separation]

- Bonded cyanopropyl
- Can be used for normal or reverse phase separation
- High column efficiency and good reproducibility



ATHENA CN APPLICATION & ORDERING INFORMATION

Athena CN is cyanide propyl bonded silica column with n-electron interaction and unshared electron pair hydrogen bonding. Can be used for both reverse phase and normal phase mode. When used for reverse mode, having different selectivity from C18 and C8 columns; when used for normal phase mode, retention is lower than non-bonded silica gel column.

Ordering Information:

Packings	Particle size	diameter × length	Cat. No
Athena CN	3µm	2.1 × 50mm	8.210534.0001
Athena CN	3µm	2.1 × 100mm	8.211034.0001
Athena CN	3µm	2.1 × 150mm	8.211534.0001
Athena CN	3µm	2.1 × 200mm	8.212034.0001
Athena CN	3µm	2.1 × 250mm	8.212534.0001
Athena CN	3µm	4.6 × 50mm	8.460534.0001
Athena CN	3µm	4.6 × 100mm	8.461034.0001
Athena CN	3µm	4.6 × 150mm	8.461534.0001
Athena CN	3µm	4.6 × 200mm	8.462034.0001
Athena CN	3µm	4.6 × 250mm	8.462534.0001
Athena CN	5µm	2.1 × 50mm	8.210533.0001
Athena CN	5µm	2.1 × 100mm	8.211033.0001
Athena CN	5µm	2.1 × 150mm	8.211533.0001
Athena CN	5µm	2.1 × 200mm	8.212033.0001
Athena CN	5µm	2.1 × 250mm	8.212533.0001
Athena CN	5µm	4.6 × 50mm	8.460533.0001
Athena CN	5µm	4.6 × 100mm	8.461033.0001
Athena CN	5µm	4.6 × 150mm	8.461533.0001
Athena CN	5µm	4.6 × 200mm	8.462033.0001
Athena CN	5µm	4.6 × 250mm	8.462533.0001

ATHENA CN APPLICATION & ORDERING INFORMATION

www.doalab.com

info@doalab.com (+90) 212 509 21 12