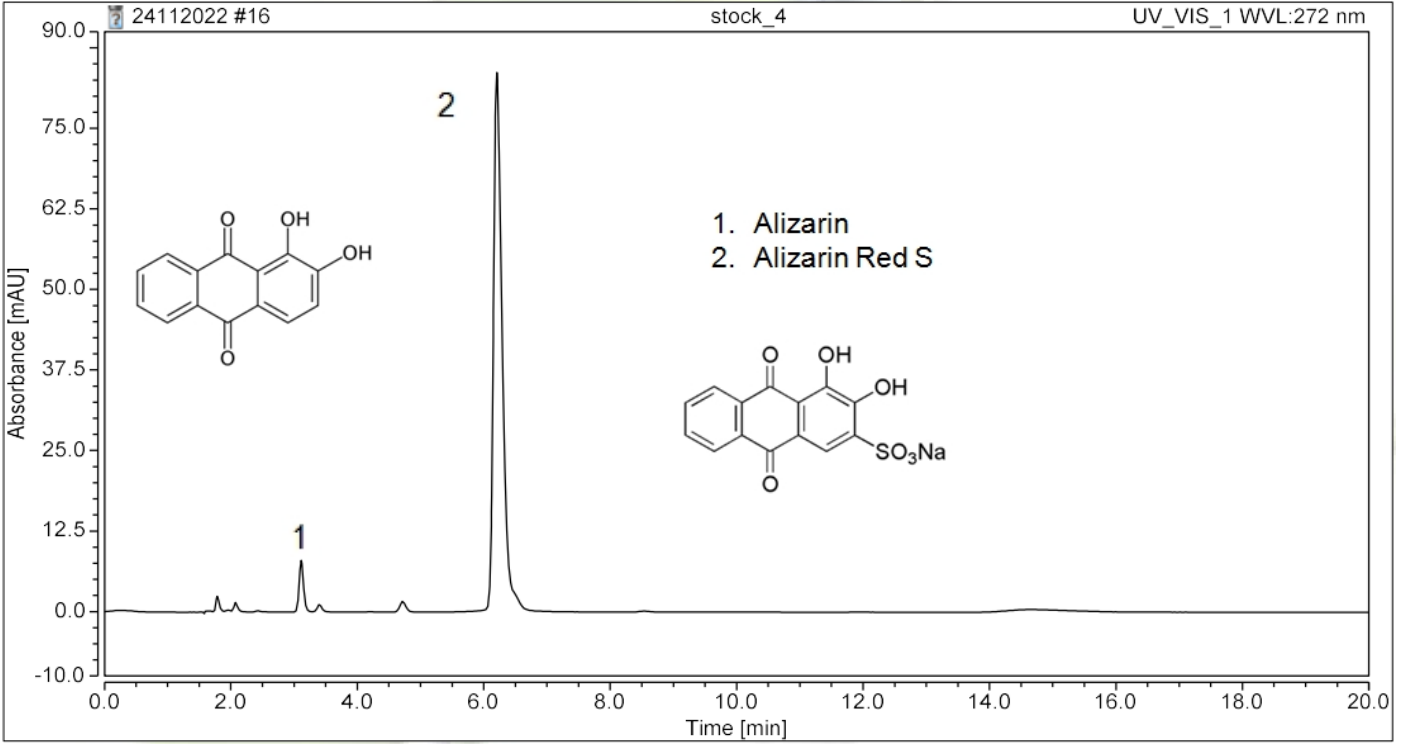


DOA  
LABORATUVAR  
TEKNOLOJİLERİ



| Chromatogram and Results      |   |
|-------------------------------|---|
| <b>Column</b>                 | ATHENA C18-WP, 150x4.6mm, 5µm           |
| <b>Mobil Phase</b>            | Buffer (A)/MeOH, %50:50                 |
| <b>Buffer (A)</b>             | 10mM Tetramethylammonium sulfate Ph:2.2 |
| <b>Flow Rate (mL/dk)</b>      | 1.0                                     |
| <b>Run Time (min):</b>        | 10.0                                    |
| <b>Injection Volume( µL):</b> | 5.0                                     |
| <b>Wavelength:</b>            | 272                                     |